

State Board of Education School Report Card 2006-2007

University Place Elementary School

State Board of Education Members

Gov. Bob Riley, Board President
Joseph B. Morton, Superintendent of Education
Randy McKinney, President Pro Tem, District 1
Betty Peters, District 2
Stephanie W. Bell, District 3
Dr. Ethel H Hall, Vice President Emerita, District 4
Ella B. Bell, District 5
David F. Byers Jr., VicePresident, District 6
Sandra Ray, District 7
Dr. Mary Jane Caylor, District 8

Principal

Ms. Presonia Lynette Alexander

Superintendent

Dr. Ann Roy Moore

School Board Members

Dr. James I Dawson
Mr. Topper Birney
Dr. Jennie Robinson
Mr. Douglas C. Martinson II
Ms. Alta Morrison

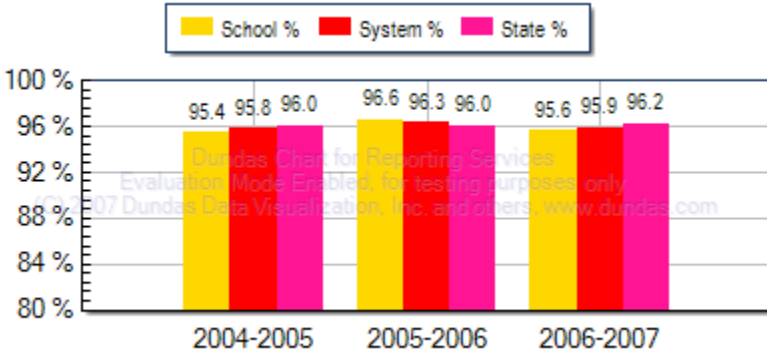
University Place Elementary School
4503 University Ave NW
Huntsville, AL 35816
(256)428-7440

*Report cards are prepared by the Alabama Department of Education. For more information including a glossary of terms, grading scales, and detailed data, visit the SDE Web site Accountability Reporting System at:
<http://www.alsde.edu/Accountability/preAccountability.asp>*

Average Daily Membership

This is the average number of students on attendance rolls during the first 20 days of school after Labor Day.

School Year	ADM
2006-2007	315.45
2005-2006	346.55
2004-2005	401.075

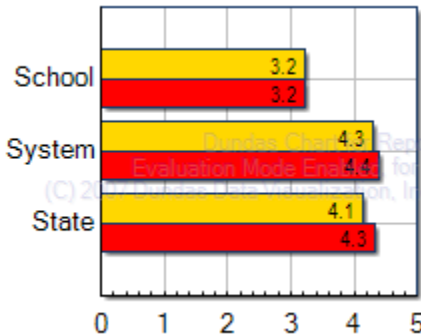
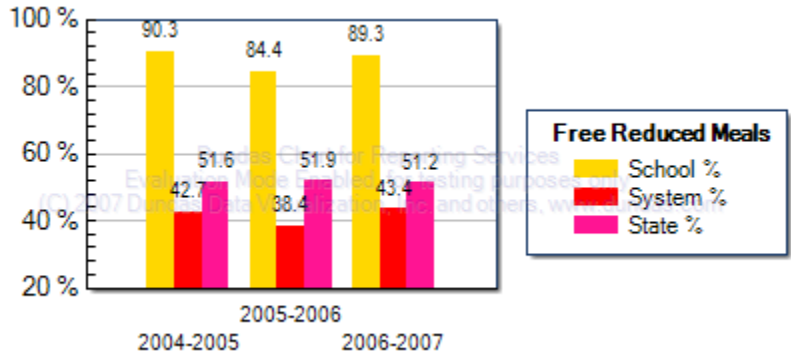


Average Daily Attendance

This is the percent of students that attend school each day.

Students Eligible for Free or Reduced Price Meals

This is the percent of students that applied for and were approved as reported on the Fall Attendance Report. It is an indicator of poverty.



Technology

Internet access and computer use in schools. A lower number indicates greater student access to technology.

Teacher Qualifications

This table shows the percentage of teachers holding each level of certification as issued by the Alabama Department of Education for this school year.

Six Year (Class AA) through Doctorate	Master's Degree (Class A)	Bachelor's Degree (Class B)
4.1	44.9	51.0

Percentage of all Elementary and Secondary Teachers with Alternative or Emergency Certification	0.0
---	-----

Safety & Discipline

The following table shows the types of discipline problems that have occurred at this school and what actions were taken.

Incident Type	Incidents Reported	Action Taken		
		Suspension	Expulsion	Alternative School
Assault	0	0	0	0
Bomb Threat	0	0	0	0
Drug Related	0	0	0	0
Weapon Related	0	0	0	0

As required by federal law, students must be allowed to transfer to another school if their school is identified as persistently dangerous.
Is this a transfer option school? **NO**

Staffing

The following full and part time professionals were employed at this school this year.

	School	System	State
Teacher	24.0	1,638.9	49,527.5
Counselor	1.0	71.0	1,839.2
Librarian	1.0	45.0	1,422.2
Administrator	1.0	80.0	2,642.2
Nurse	1.0	34.0	979.2
Instruction Assistant	2.0	180.0	6,962.7
Other	3.0	98.0	2,470.1
Support Staff	12.0	883.0	29,448.8

Career / Tech Education

Business/Industry Certification (BIC) is a means of assisting career/technical education programs to improve by setting standards against which all programs can measure progress. The goal is for all programs to remain in compliance with business/industry standards. The number indicates the percentage of programs that remain in compliance. The letter grade measures whether or not these programs are on track to meet that goal.

Programs Achieving Business/Industry Certification	Rate	Grade
	N/A	N/A

Percent of High School Students Enrolled in Career /Tech Classes

This is the percentage of students in Grades 9-12 who are enrolled in career and technical education coursework as compared to the overall student population in Grades 9-12.

Percent of Students Enrolled in Career/Tech Classes 2006-2007	System	State
	39.1	54.1

Percent of Positive Placements in Career / Tech

This represents the percentage of students who completed a career/technical program of studies and took a job in a related field or enrolled in post-secondary studies.

Percent of Positive Placements	System	State
	81.5	88.8

Highly Qualified Teachers

This is the percent of teachers that are teaching and the percent of classes taught in a core subject for which the teacher is highly qualified by the State of Alabama as required by the federal legislation known as: No Child Left Behind

CLASSES	Total Classes		Percentage Taught By Highly Qualified Teachers		Percentage Not Taught By Highly Qualified Teachers	
	2005-2006	2006-2007	2005-2006	2006-2007	2005-2006	2006-2007
SCHOOL	2005-2006	2006-2007	2005-2006	2006-2007	2005-2006	2006-2007
Elementary	105	105	93.3	93.3	6.7	6.7
Secondary						
TOTAL CLASSES	105	105	93.3	93.3	6.7	6.7
SYSTEM	2005-2006	2006-2007	2005-2006	2006-2007	2005-2006	2006-2007
Elementary	3,052	3,052	92.6	92.6	7.4	7.4
Secondary	2,209	2,209	83.1	83.1	16.9	16.9
TOTAL CLASSES	5,261	5,261	88.6	88.6	11.4	11.4
STATE	2005-2006	2006-2007	2005-2006	2006-2007	2005-2006	2006-2007
Elementary	96,939	97,056	95.0	95.0	5.0	5.0
Secondary	60,513	60,032	84.3	84.5	15.7	15.5
TOTAL CLASSES	157,452	157,088	90.9	91.0	9.1	9.0

TEACHERS	Total Teachers		Percentage Highly Qualified Teachers		Percentage Not Highly Qualified Teachers	
	2005-2006	2006-2007	2005-2006	2006-2007	2005-2006	2006-2007
SCHOOL	2005-2006	2006-2007	2005-2006	2006-2007	2005-2006	2006-2007
Elementary	29	29	93.1	93.1	6.9	6.9
Secondary						
TOTAL TEACHERS	29	29	93.1	93.1	6.9	6.9
SYSTEM	2005-2006	2006-2007	2005-2006	2006-2007	2005-2006	2006-2007
Elementary	864	864	89.7	89.7	10.3	10.3
Secondary	543	543	79.4	79.4	20.6	20.6
TOTAL TEACHERS	1,407	1,407	85.7	85.7	14.3	14.3
STATE	2005-2006	2006-2007	2005-2006	2006-2007	2005-2006	2006-2007
Elementary	24,020	24,042	93.5	93.6	6.5	6.4
Secondary	15,438	15,279	80.8	81.0	19.2	19.0
TOTAL TEACHERS	39,458	39,321	88.5	88.7	11.5	11.3

Adequate Yearly Progress Status for 2007-2008

Based on School Year 2006-2007 Data

State Accountability in Alabama is based on the federal law known as the "No Child Left Behind" Act (NCLB) of 2001. NCLB uses the term Adequate Yearly Progress (AYP) to describe whether a school or system has met its annual accountability goals.

COMPONENTS OF AYP

1. Annual Goals for Reading and Mathematics
 - Percentage of students scoring proficient or higher
2. Participation Rate
 - Percentage of students participating in assessments
3. Additional Academic Indicators
 - Attendance
 - Graduation Rate

ASSESSMENTS USED IN DETERMINING AYP

- Alabama Reading and Mathematics Test (ARMT)
- Reading: Grades 3-8
 - Mathematics: Grades 3-8
- Alabama High School Graduation Exam (AHSGE)
- Reading: Grade 11
 - Mathematics: Grade 11
- Alabama Alternate Assessment (AAA)
- Reading: Grades 3-8 and 11
 - Mathematics: Grades 3-8 and 11

For more detail on the Alabama Accountability System, please reference the Accountability Interpretive Guide which can be found on the SDE Web site:

<http://www.alsde.edu/Accountability/preAccountability.asp>

Select the Accountability Reporting option on the home page. Then request the School Year: 2006-2007 Report: 2007 Interpretive Guide for State Accountability.

Adequate Yearly Progress Status for 2007-2008

Based on School Year 2006-2007 Data

2007-2008 AYP Status: Made AYP

School Improvement Status: Not in School Improvement

Met 13 AYP Goals out of 13 (100.00%)

READING

2006-2007 AYP Status: Made AYP

Reading School Improvement Status: Not in School Improvement

Student Group	Percent Participation Goal = 95.00%	Met Participation Goal	Proficiency Index Goal = 0.00	Met Proficiency Goal *
All Students	99	Yes	10.53	Yes
Special Education	100	N/A	-10.71	N/A
American Indian/Alaskan	No Data	No Data	No Data	No Data
Asian/Pacific Islander	~	N/A	~	N/A
Black	99	Yes	10.35	Yes
Hispanic	96	N/A	7.88	N/A
White	100	N/A	~	N/A
Limited English Proficient	96	N/A	5.71	N/A
Free/Reduced Meals	98	Yes	9.88	Yes

MATHEMATICS

2006-2007 AYP Status: Made AYP

Mathematics School Improvement Status: Not in School Improvement

Student Group	Percent Participation Goal = 95.00%	Met Participation Goal	Proficiency Index Goal = 0.00	Met Proficiency Goal *
All Students	99	Yes	18.79	Yes
Special Education	100	N/A	-16.43	N/A
American Indian/Alaskan	No Data	No Data	No Data	No Data
Asian/Pacific Islander	~	N/A	~	N/A
Black	99	Yes	16.98	Yes
Hispanic	100	N/A	24.44	N/A
White	100	N/A	~	N/A
Limited English Proficient	100	N/A	22.93	N/A
Free/Reduced Meals	99	Yes	18.08	Yes

Additional Academic Indicators

Student Group	Attendance Rate Goal = 95%	Attendance Rate Previous Year	Met Attendance AYP *	Graduation Rate Goal = 90%	Graduation Rate Previous Year	Met Graduation Rate AYP *
All Students	95.64	96.60	Yes	N/A	N/A	No Data

~ Not reported, less than 10 students (protects confidentiality)
 NA = Not in AYP, less than 40 students (ensures reliability)

* AYP is met if the goal is met or the goal is within the confidence interval (ensures reliability)
 ** AYP is met if the goal is met or there is improvement from the previous year

	SCHOOL						SYSTEM					
			Level I	Level II	Level III	Level IV			Level I	Level II	Level III	Level IV
	Number Tested	Percent Tested	Percent Not Meeting Standard	Percent Partially Meeting Standard	Percent Meeting Standard	Percent Exceeding Standard	Number Tested	Percent Tested	Percent Not Meeting Standard	Percent Partially Meeting Standard	Percent Meeting Standard	Percent Exceeding Standard
Grade 3	Mathematics											
All Students	52	100.00	5.80	19.20	25.00	50.00	1,791	98.14	9.44	18.76	27.30	44.50
Special Education	***	***	***	***	***	***	187	88.21	34.22	28.34	21.39	16.04
American Indian/Alaskan	N/A	N/A	N/A	N/A	N/A	N/A	***	***	***	***	***	***
Asian/Pacific Islander	***	***	***	***	***	***	37	92.50	8.11	2.70	24.32	64.86
Black	37	100.00	2.70	18.90	29.70	48.60	802	97.80	15.71	28.30	31.05	24.94
Hispanic	***	***	***	***	***	***	85	100.00	10.59	25.88	32.94	30.59
White	***	***	***	***	***	***	855	98.50	3.51	9.47	23.63	63.39
Male	29	100.00	3.40	13.80	37.90	44.80	891	97.91	11.00	19.64	26.37	42.99
Female	23	100.00	8.70	26.10	8.70	56.50	900	98.36	7.89	17.89	28.22	46.00
Poverty	50	100.00	6.00	20.00	26.00	48.00	896	98.03	15.18	27.23	30.13	27.46
Limited English Proficient	***	***	***	***	***	***	70	98.59	14.29	28.57	21.43	35.71
Migrant	N/A	N/A	N/A	N/A	N/A	N/A	N/A	N/A	N/A	N/A	N/A	N/A
Grade 4	Mathematics											
All Students	36	97.30	5.60	33.30	25.00	36.10	1,826	98.60	2.41	23.82	25.52	48.25
Special Education	***	***	***	***	***	***	238	93.70	12.18	50.00	19.33	18.49
American Indian/Alaskan	N/A	N/A	N/A	N/A	N/A	N/A	***	***	***	***	***	***
Asian/Pacific Islander	N/A	N/A	N/A	N/A	N/A	N/A	66	98.51	1.52	1.52	18.18	78.79
Black	30	96.80	6.70	33.30	26.70	33.30	800	97.80	3.75	39.88	30.00	26.38
Hispanic	***	***	***	***	***	***	77	98.72	3.90	23.38	31.17	41.56
White	***	***	***	***	***	***	871	99.32	1.15	10.68	21.58	66.59
Male	19	95.00	10.50	36.80	21.10	31.60	947	98.34	2.32	25.55	24.29	47.84
Female	17	100.00	0.00	29.40	29.40	41.20	879	98.88	2.50	21.96	26.85	48.69
Poverty	34	97.10	5.90	35.30	26.50	32.40	855	97.83	3.98	36.49	29.71	29.82
Limited English Proficient	***	***	***	***	***	***	86	97.73	2.33	19.77	26.74	51.16
Migrant	N/A	N/A	N/A	N/A	N/A	N/A	***	***	***	***	***	***
Grade 5	Mathematics											
All Students	47	100.00	0.00	23.40	44.70	31.90	1,643	98.27	1.16	27.02	31.83	39.99
Special Education	***	***	***	***	***	***	222	91.74	5.41	64.41	21.17	9.01
American Indian/Alaskan	N/A	N/A	N/A	N/A	N/A	N/A	***	***	***	***	***	***
Asian/Pacific Islander	N/A	N/A	N/A	N/A	N/A	N/A	37	97.37	0.00	10.81	8.11	81.08
Black	31	100.00	0.00	19.40	48.40	32.30	715	98.08	2.10	43.22	36.50	18.18
Hispanic	13	100.00	0.00	30.80	38.50	30.80	75	100.00	2.67	38.67	34.67	24.00
White	***	***	***	***	***	***	807	98.53	0.25	12.39	28.62	58.74
Male	24	100.00	0.00	25.00	50.00	25.00	867	97.53	1.61	27.34	30.57	40.48
Female	23	100.00	0.00	21.70	39.10	39.10	776	99.11	0.64	26.68	33.25	39.43
Poverty	45	100.00	0.00	24.40	46.70	28.90	786	97.64	1.40	42.37	37.53	18.70
Limited English Proficient	11	100.00	0.00	36.40	36.40	27.30	68	98.55	2.94	39.71	26.47	30.88
Migrant	N/A	N/A	N/A	N/A	N/A	N/A	***	***	***	***	***	***

*** Less than 10 students tested N/D = No data available N/A = Not Applicable N/R = Not Reported

	SCHOOL						SYSTEM					
			Level I	Level II	Level III	Level IV			Level I	Level II	Level III	Level IV
	Number Tested	Percent Tested	Percent Not Meeting Standard	Percent Partially Meeting Standard	Percent Meeting Standard	Percent Exceeding Standard	Number Tested	Percent Tested	Percent Not Meeting Standard	Percent Partially Meeting Standard	Percent Meeting Standard	Percent Exceeding Standard
Grade 6	Mathematics											
All Students	N/A	N/A	N/A	N/A	N/A	N/A	1,727	97.90	0.06	29.30	36.54	34.11
Special Education	N/A	N/A	N/A	N/A	N/A	N/A	202	93.09	0.50	71.78	21.29	6.44
American Indian/Alaskan	N/A	N/A	N/A	N/A	N/A	N/A	13	92.86	0.00	15.38	30.77	53.85
Asian/Pacific Islander	N/A	N/A	N/A	N/A	N/A	N/A	40	97.56	0.00	2.50	30.00	67.50
Black	N/A	N/A	N/A	N/A	N/A	N/A	763	97.82	0.13	49.67	40.63	9.57
Hispanic	N/A	N/A	N/A	N/A	N/A	N/A	64	100.00	0.00	32.81	50.00	17.19
White	N/A	N/A	N/A	N/A	N/A	N/A	845	97.91	0.00	12.07	32.19	55.74
Male	N/A	N/A	N/A	N/A	N/A	N/A	885	97.90	0.11	29.60	33.45	36.84
Female	N/A	N/A	N/A	N/A	N/A	N/A	842	97.91	0.00	28.98	39.79	31.24
Poverty	N/A	N/A	N/A	N/A	N/A	N/A	830	97.30	0.12	46.99	40.24	12.65
Limited English Proficient	N/A	N/A	N/A	N/A	N/A	N/A	37	97.37	0.00	40.54	48.65	10.81
Migrant	N/A	N/A	N/A	N/A	N/A	N/A	N/A	N/A	N/A	N/A	N/A	N/A
Grade 7	Mathematics											
All Students	N/A	N/A	N/A	N/A	N/A	N/A	1,735	97.36	0.12	39.14	33.03	27.72
Special Education	N/A	N/A	N/A	N/A	N/A	N/A	244	94.94	0.82	85.25	9.43	4.51
American Indian/Alaskan	N/A	N/A	N/A	N/A	N/A	N/A	***	***	***	***	***	***
Asian/Pacific Islander	N/A	N/A	N/A	N/A	N/A	N/A	40	97.56	0.00	17.50	32.50	50.00
Black	N/A	N/A	N/A	N/A	N/A	N/A	769	96.97	0.13	60.47	31.73	7.67
Hispanic	N/A	N/A	N/A	N/A	N/A	N/A	83	97.65	0.00	59.04	25.30	15.66
White	N/A	N/A	N/A	N/A	N/A	N/A	833	97.66	0.12	18.49	34.81	46.58
Male	N/A	N/A	N/A	N/A	N/A	N/A	888	97.26	0.23	42.91	31.31	25.56
Female	N/A	N/A	N/A	N/A	N/A	N/A	847	97.47	0.00	35.18	34.83	29.99
Poverty	N/A	N/A	N/A	N/A	N/A	N/A	770	96.01	0.26	63.77	28.05	7.92
Limited English Proficient	N/A	N/A	N/A	N/A	N/A	N/A	59	96.72	0.00	67.80	27.12	5.08
Migrant	N/A	N/A	N/A	N/A	N/A	N/A	***	***	***	***	***	***
Grade 8	Mathematics											
All Students	N/A	N/A	N/A	N/A	N/A	N/A	1,784	97.86	0.06	32.06	36.66	31.22
Special Education	N/A	N/A	N/A	N/A	N/A	N/A	234	91.76	0.00	75.21	21.79	2.99
American Indian/Alaskan	N/A	N/A	N/A	N/A	N/A	N/A	11	100.00	0.00	27.27	45.45	27.27
Asian/Pacific Islander	N/A	N/A	N/A	N/A	N/A	N/A	44	95.65	0.00	9.09	29.55	61.36
Black	N/A	N/A	N/A	N/A	N/A	N/A	807	97.46	0.12	53.41	37.79	8.67
Hispanic	N/A	N/A	N/A	N/A	N/A	N/A	60	100.00	0.00	46.67	48.33	5.00
White	N/A	N/A	N/A	N/A	N/A	N/A	862	98.18	0.00	12.30	35.03	52.67
Male	N/A	N/A	N/A	N/A	N/A	N/A	895	97.71	0.11	36.31	33.07	30.50
Female	N/A	N/A	N/A	N/A	N/A	N/A	889	98.02	0.00	27.78	40.27	31.95
Poverty	N/A	N/A	N/A	N/A	N/A	N/A	780	97.01	0.00	54.36	36.54	9.10
Limited English Proficient	N/A	N/A	N/A	N/A	N/A	N/A	42	100.00	0.00	57.14	38.10	4.76
Migrant	N/A	N/A	N/A	N/A	N/A	N/A	N/A	N/A	N/A	N/A	N/A	N/A

*** Less than 10 students tested N/D = No data available N/A = Not Applicable N/R = Not Reported

	SCHOOL						SYSTEM					
			Level I	Level II	Level III	Level IV			Level I	Level II	Level III	Level IV
	Number Tested	Percent Tested	Percent Not Meeting Standard	Percent Partially Meeting Standard	Percent Meeting Standard	Percent Exceeding Standard	Number Tested	Percent Tested	Percent Not Meeting Standard	Percent Partially Meeting Standard	Percent Meeting Standard	Percent Exceeding Standard
Grade 3	Reading											
All Students	51	98.10	2.00	23.50	47.10	27.50	1,787	97.92	1.85	17.52	33.63	47.01
Special Education	***	***	***	***	***	***	189	89.15	10.05	51.32	25.40	13.23
American Indian/Alaskan	N/A	N/A	N/A	N/A	N/A	N/A	***	***	***	***	***	***
Asian/Pacific Islander	***	***	***	***	***	***	34	85.00	2.94	0.00	17.65	79.41
Black	37	100.00	0.00	18.90	51.40	29.70	801	97.68	2.62	28.84	42.07	26.47
Hispanic	***	***	***	***	***	***	83	97.65	3.61	25.30	37.35	33.73
White	***	***	***	***	***	***	857	98.73	0.93	6.77	26.02	66.28
Male	29	100.00	0.00	31.00	51.70	17.20	890	97.80	2.36	20.79	34.61	42.25
Female	22	95.70	4.50	13.60	40.90	40.90	897	98.03	1.34	14.27	32.66	51.73
Poverty	49	98.00	2.00	24.50	49.00	24.50	895	97.92	3.13	28.16	40.89	27.82
Limited English Proficient	***	***	***	***	***	***	63	88.73	4.76	33.33	31.75	30.16
Migrant	N/A	N/A	N/A	N/A	N/A	N/A	N/A	N/A	N/A	N/A	N/A	N/A
Grade 4	Reading											
All Students	36	97.30	0.00	36.10	36.10	27.80	1,830	98.81	0.98	17.38	28.36	53.28
Special Education	***	***	***	***	***	***	238	93.70	5.46	46.22	27.73	20.59
American Indian/Alaskan	N/A	N/A	N/A	N/A	N/A	N/A	***	***	***	***	***	***
Asian/Pacific Islander	N/A	N/A	N/A	N/A	N/A	N/A	65	97.01	0.00	4.62	12.31	83.08
Black	30	96.80	0.00	36.70	33.30	30.00	805	98.41	1.24	29.57	37.39	31.80
Hispanic	***	***	***	***	***	***	77	98.72	2.60	20.78	32.47	44.16
White	***	***	***	***	***	***	871	99.32	0.69	6.77	20.67	71.87
Male	19	95.00	0.00	52.60	31.60	15.80	950	98.65	1.05	21.47	29.05	48.42
Female	17	100.00	0.00	17.60	41.20	41.20	880	98.99	0.91	12.95	27.61	58.52
Poverty	34	97.10	0.00	38.20	38.20	23.50	859	98.28	1.63	27.94	36.90	33.53
Limited English Proficient	***	***	***	***	***	***	86	97.73	2.33	20.93	27.91	48.84
Migrant	N/A	N/A	N/A	N/A	N/A	N/A	***	***	***	***	***	***
Grade 5	Reading											
All Students	44	93.60	2.30	25.00	50.00	22.70	1,639	98.03	1.40	15.31	28.68	54.61
Special Education	***	***	***	***	***	***	223	92.15	7.62	45.29	33.18	13.90
American Indian/Alaskan	N/A	N/A	N/A	N/A	N/A	N/A	***	***	***	***	***	***
Asian/Pacific Islander	N/A	N/A	N/A	N/A	N/A	N/A	36	94.74	0.00	5.56	2.78	91.67
Black	31	100.00	0.00	25.80	54.80	19.40	715	98.08	1.96	25.31	41.26	31.47
Hispanic	10	76.90	0.00	30.00	40.00	30.00	70	93.33	5.71	27.14	30.00	37.14
White	***	***	***	***	***	***	809	98.78	0.62	5.93	18.79	74.66
Male	22	91.70	0.00	31.80	54.50	13.60	864	97.19	1.50	18.06	27.66	52.78
Female	22	95.70	4.50	18.20	45.50	31.80	775	98.98	1.29	12.26	29.81	56.65
Poverty	42	93.30	2.40	26.20	52.40	19.00	783	97.27	2.04	24.52	40.23	33.21
Limited English Proficient	***	***	***	***	***	***	62	89.86	6.45	29.03	29.03	35.48
Migrant	N/A	N/A	N/A	N/A	N/A	N/A	***	***	***	***	***	***

*** Less than 10 students tested N/D = No data available N/A = Not Applicable N/R = Not Reported

	SCHOOL						SYSTEM					
			Level I	Level II	Level III	Level IV			Level I	Level II	Level III	Level IV
	Number Tested	Percent Tested	Percent Not Meeting Standard	Percent Partially Meeting Standard	Percent Meeting Standard	Percent Exceeding Standard	Number Tested	Percent Tested	Percent Not Meeting Standard	Percent Partially Meeting Standard	Percent Meeting Standard	Percent Exceeding Standard
Grade 6	Reading											
All Students	N/A	N/A	N/A	N/A	N/A	N/A	1,730	98.07	1.16	13.01	26.76	59.08
Special Education	N/A	N/A	N/A	N/A	N/A	N/A	202	93.09	6.44	50.99	28.71	13.86
American Indian/Alaskan	N/A	N/A	N/A	N/A	N/A	N/A	13	92.86	0.00	0.00	30.77	69.23
Asian/Pacific Islander	N/A	N/A	N/A	N/A	N/A	N/A	40	97.56	0.00	5.00	12.50	82.50
Black	N/A	N/A	N/A	N/A	N/A	N/A	762	97.69	2.10	23.23	38.98	35.70
Hispanic	N/A	N/A	N/A	N/A	N/A	N/A	63	98.44	0.00	14.29	34.92	50.79
White	N/A	N/A	N/A	N/A	N/A	N/A	850	98.49	0.47	4.35	15.76	79.41
Male	N/A	N/A	N/A	N/A	N/A	N/A	885	97.90	2.15	16.72	24.86	56.27
Female	N/A	N/A	N/A	N/A	N/A	N/A	845	98.26	0.12	9.11	28.76	62.01
Poverty	N/A	N/A	N/A	N/A	N/A	N/A	830	97.30	2.05	21.57	39.16	37.23
Limited English Proficient	N/A	N/A	N/A	N/A	N/A	N/A	35	92.11	0.00	31.43	40.00	28.57
Migrant	N/A	N/A	N/A	N/A	N/A	N/A	N/A	N/A	N/A	N/A	N/A	N/A
Grade 7	Reading											
All Students	N/A	N/A	N/A	N/A	N/A	N/A	1,754	98.43	1.37	23.38	29.65	45.61
Special Education	N/A	N/A	N/A	N/A	N/A	N/A	246	95.72	7.72	63.41	20.33	8.54
American Indian/Alaskan	N/A	N/A	N/A	N/A	N/A	N/A	***	***	***	***	***	***
Asian/Pacific Islander	N/A	N/A	N/A	N/A	N/A	N/A	39	95.12	5.13	5.13	28.21	61.54
Black	N/A	N/A	N/A	N/A	N/A	N/A	783	98.74	2.04	37.68	38.70	21.58
Hispanic	N/A	N/A	N/A	N/A	N/A	N/A	81	95.29	0.00	38.27	38.27	23.46
White	N/A	N/A	N/A	N/A	N/A	N/A	841	98.59	0.71	9.51	20.45	69.32
Male	N/A	N/A	N/A	N/A	N/A	N/A	898	98.36	1.78	27.95	31.96	38.31
Female	N/A	N/A	N/A	N/A	N/A	N/A	856	98.50	0.93	18.57	27.22	53.27
Poverty	N/A	N/A	N/A	N/A	N/A	N/A	785	97.88	2.29	38.73	39.49	19.49
Limited English Proficient	N/A	N/A	N/A	N/A	N/A	N/A	58	95.08	1.72	55.17	32.76	10.34
Migrant	N/A	N/A	N/A	N/A	N/A	N/A	***	***	***	***	***	***
Grade 8	Reading											
All Students	N/A	N/A	N/A	N/A	N/A	N/A	1,779	97.59	1.52	25.69	31.48	41.32
Special Education	N/A	N/A	N/A	N/A	N/A	N/A	234	91.76	7.26	67.95	19.23	5.56
American Indian/Alaskan	N/A	N/A	N/A	N/A	N/A	N/A	11	100.00	0.00	18.18	36.36	45.45
Asian/Pacific Islander	N/A	N/A	N/A	N/A	N/A	N/A	45	97.83	0.00	13.33	35.56	51.11
Black	N/A	N/A	N/A	N/A	N/A	N/A	807	97.46	2.60	42.26	38.29	16.85
Hispanic	N/A	N/A	N/A	N/A	N/A	N/A	54	90.00	5.56	42.59	31.48	20.37
White	N/A	N/A	N/A	N/A	N/A	N/A	862	98.18	0.35	9.86	24.83	64.97
Male	N/A	N/A	N/A	N/A	N/A	N/A	893	97.49	2.69	31.02	29.34	36.95
Female	N/A	N/A	N/A	N/A	N/A	N/A	886	97.68	0.34	20.32	33.63	45.71
Poverty	N/A	N/A	N/A	N/A	N/A	N/A	773	96.14	2.98	44.24	37.39	15.39
Limited English Proficient	N/A	N/A	N/A	N/A	N/A	N/A	38	90.48	7.89	60.53	23.68	7.89
Migrant	N/A	N/A	N/A	N/A	N/A	N/A	N/A	N/A	N/A	N/A	N/A	N/A

*** Less than 10 students tested N/D = No data available N/A = Not Applicable N/R = Not Reported

Alabama Alternate Assessment

The Alabama Alternate Assessment is designed for students with disabilities whose Individualized Education Program [IEP] team determines that the student will not participate in the regular state assessments.

		Level 1	Level 2	Level 3	Level 4			Level 1	Level 2	Level 3	Level 4
Number Tested	Percent Tested	Percent Not Meeting Standard	Percent Partially Meeting Standard	Percent Meeting Standard	Percent Exceeding Standard	Number Tested	Percent Tested	Percent Not Meeting Standard	Percent Partially Meeting Standard	Percent Meeting Standard	Percent Exceeding Standard

Mathematics

All Students	N/A	N/A	N/A	N/A	N/A	N/A	95	80.00	12.63	30.53	41.05	15.79
--------------	-----	-----	-----	-----	-----	-----	----	-------	-------	-------	-------	-------

*** Less than 10 students tested N/D = No data available N/A = Not Applicable N/R = Not Reported

Reading

All Students	N/A	N/A	N/A	N/A	N/A	N/A	95	88.00	7.37	34.74	50.53	7.37
--------------	-----	-----	-----	-----	-----	-----	----	-------	------	-------	-------	------

*** Less than 10 students tested N/D = No data available N/A = Not Applicable N/R = Not Reported

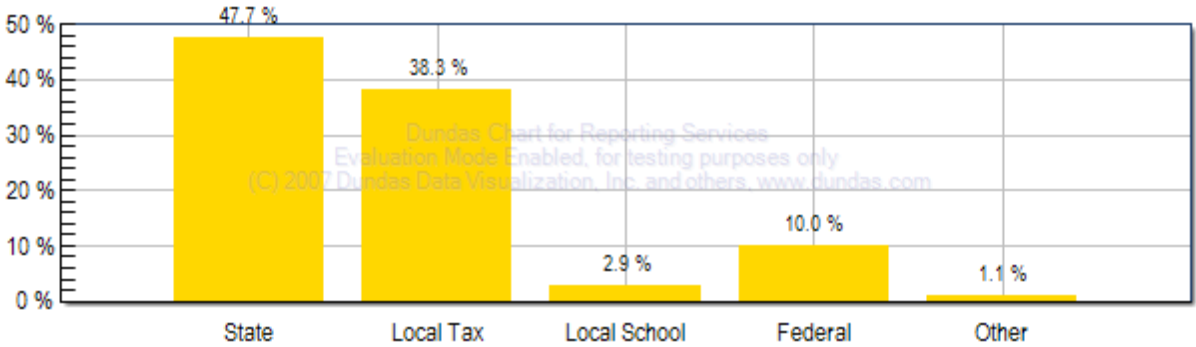
Alabama Direct Assessment of Writing

Alabama students in grades five, seven, and ten are given the Alabama Direct Assessment of Writing each year to measure their writing skills. This table shows how well students met the performance standard of this test.

		SCHOOL					SYSTEM					
		Level 1	Level 2	Level 3	Level 4			Level 1	Level 2	Level 3	Level 4	
Number Tested	Percent Tested	Percent Not Meeting Standard	Percent Partially Meeting Standard	Percent Meeting Standard	Percent Exceeding Standard	Number Tested	Percent Tested	Percent Not Meeting Standard	Percent Partially Meeting Standard	Percent Meeting Standard	Percent Exceeding Standard	
5	44	93.62	0.00	52.27	47.73	0.00	1618	96.89	4.76	35.66	47.90	11.68
7	N/A	N/A	N/A	N/A	N/A	N/A	1706	97.10	4.22	25.91	53.93	15.94
10	N/A	N/A	N/A	N/A	N/A	N/A	1562	92.54	2.88	16.77	47.95	32.39

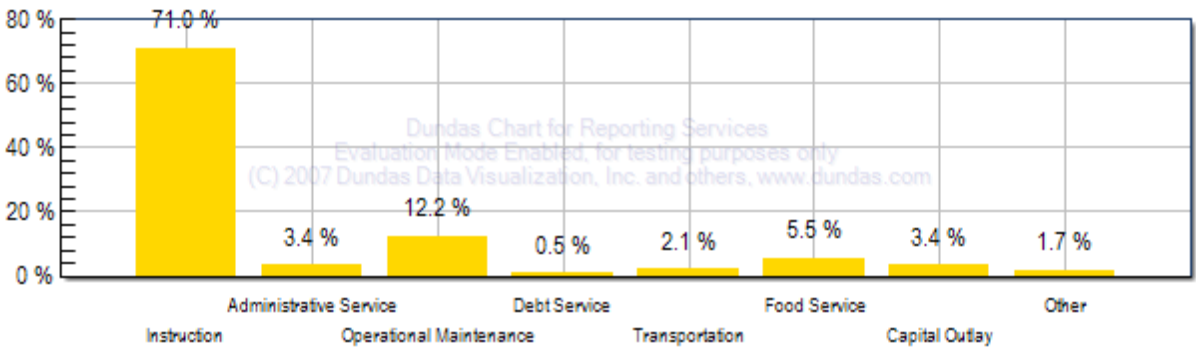
*** Less than 10 students tested N/D = No data available N/A = Not Applicable N/R = Not Reported

Sources of School System Revenues



Total 2005-2006 Fiscal Year Expenditure = \$208,482,961.47

School System's Use of Funds



Source of Revenue	Amount
Local School Revenue	\$6,010,632.07
Local Capital Projects Revenue	\$5,341,029.33
Other Local Revenue (includes local taxes)	\$73,978,429.50
Total Local Revenue	\$85,330,090.90

Local Revenue Breakdown

This table provides a breakdown of local revenues for fiscal year. The revenue from local school projects/activities and the capital projects fund have been itemized to provide a more complete analysis of local fund sources.

Mills Equivalent

This is the total amount of revenue collected locally for public school purposes, divided by the value of one regular system mill of ad valorem tax. The state average is [state# here] mills equivalent.

This System	Grade
39.68	B+

Spending Per Student

The table below shows the spending per student for this school system. The letter grade compares the system's per student spending to the state, southeast, and nation.

School Year	Amount	State	SouthEast	National
2005-2006	\$8,573.86	A	B-	C-

A = Excellent B = Good C = Average D = Poor F = Fail